



March 2018 Newsletter

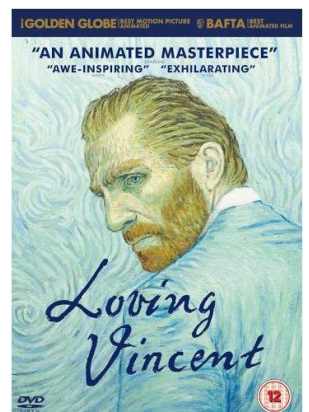
March	Tuesday	6	Damian Osborne 'Alla Prima' portrait in oils from a live model, plus Art Challenge: "Blue, what it means to you."* This is not a competition * Bring your drawing or painting relating to the challenge theme along to the meeting and let us all look at your beautiful artwork. We will take some pics of the work and post it on Facebook and the website (with your permission) Label Artist name+Title Rules of the challenge - NONE (except the usual - no copying other artists' work or photos unless you have written approval)
	Thursday	15	Email photo of exhibit artwork for digital + printed individualised poster
	Saturday	17	SASA Art in Park at Rondebosch Park: secretary@sasa-artists.co.za
	Sunday	18	Plein air outing 1pm De Waal Park plus free music concert from 3 to 6pm
April	Tuesday	3	Acrylic Pouring technique demonstration by Lynne Menge, plus Art Challenge- members to bring artwork, theme: "Fall in Love with Life"
	Thursday	5	Set up Exhibit at Pick n Pay centre 5.30pm- book your stand with Dot
	Saturday	7	Damian Osborne oil portrait workshop Portuguese Hall 9.30am-2.30pm
	Sunday	15	End of Exhibit- collect unsold work
	Saturday	21	Plein air outing to Anna Beula farm near Morningstar
May	Tuesday	8	Due to Public Holiday on 1st May- Meeting changed to 8th Sculpture demonstration by Harry Johnson
	Saturday	12	Dylan Lewis sculpture garden guided walk R140- share transport
	Friday	18	Hermanus Fyn Arts tondi competition closing date

Welcome members, visitors. A special thank you to the committee members and those members who are always willing to help.

Wow! All the art works brought for our theme: Blue, what it means to you, were fantastic. Well done and thank you for sharing with us. Lesley will put photos of them on our Facebook page. Please carry on with this enthusiasm next month, Theme: Fall in Love with Life. Make use of Lesley's offer to have a personalised gallery on our Facebook page by sending her digital copies of your artwork with the title, size, medium and your contact details if you have a price on to buyers can contact you directly. You do not have to be on Facebook to make use of this opportunity. Lesley Milne lesleymilne@yahoo.com. Congratulations to Lesley Milne and Jeanette Swart for being selected to take part in the International Watercolor Society of SA exhibition which opened on 9th of March in Sea Point, and to Michelle Collins for her selection in the Festival of Art in Franschhoek from 17 to 18th March. Thank you Liz Jones and Jean Scott for sharing the catering responsibilities- we request other members to volunteer their help with making sandwiches, packing out the cups and washing up afterwards. Our outreach box enables our members to bring old art items that are no longer used, to our monthly meetings and are distributed to needy organisations and individuals to help encourage those budding artists without the tools of the trade, to achieve their artistic potential.

Thank you Anet Louw for donating the following to BASE library: **Kitskuns: Kuns uit die gewone** By: Angie Franke and Monique Day-Wilde CODE: M5 **Vibrant Children's Portraits** By: Victoria Lisi CODE: O20 **Nightscapes: Effects and tricks** By: Jose M. Parramon CODE: W24 **Da Vinci the Genius** By: American series CODE:V52. Our sincerest condolences to those who have lost loved ones, Taubelle Gersh's husband passed away. BASE library have also purchased a copy of 'Loving Vincent' DVD animated live story of Vincent Van Gogh. Please note a late fee of R5 will be charged from April for DVD's not returned by the following meeting. SA Artist magazine subscriptions have arrived and can be collected from Lesley at our meetings

Monthly Meeting: At Milnerton Bowls Club 1st Tuesday of every month excluding January and the May2018 meeting will be 2nd Tuesday=8th May), from 18h45 to start the demo/presentation promptly at 7pm. Members R10, Visitors R20 and students R10 entry. Tea & coffee & refreshments before we start



Please note that our annual **subscription fees**, which include membership to SANAVA, will remain the same for the third year in a row: please pay via EFT R180 to Blaauwberg Art Society at ABSA bank Table View, account no. [9238594101](https://www.absa.co.za), please note that if you are paying cash into the bank a bank fee of R30 will be applicable.

Your 2018 membership card will allow you to claim a 5% discount at Creative Atelier, 44 Oxford Street, Durbanville, and a 10% discount from Deckle Edge, all branches, and the Italian Art Shop in Rondebosch and Artland in Claremont (attends most BASE meetings with canvasses and acrylic paint for sale)

Workshop There was a disappointing turn out of only 4 participants for the workshop hosted by Donna Mc Kellar , on 24 February. Please let's make these workshops viable as we need a minimum of 5 participants and a maximum of 10 to cover the expenses.

Next workshop: Damian Osborne oil portrait workshop on Saturday 7th April at the Portuguese Hall in Rugby. R350 with a R50 deposit upon booking. Please place bookings with Dot: dpickett@netactive.co.za. Set up from 9am – start 9.30am to finish by 2.30pm- bring own lunch.

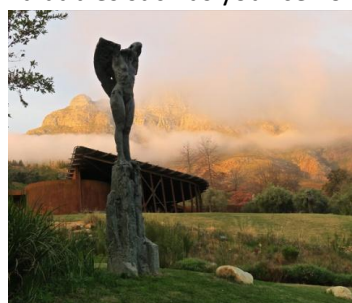
Date for exhibition at the Pick n Pay centre **this year: 2018 are set up 5 April to 15 April**. REMEMBER to email digital **photo of one of your artworks** to dpickett@netactive.co.za by 15 March so we can design your personalised **poster** to print for your car- these posters will also go onto our Facebook page and website and we encourage you to share them digitally with friends and family. We will advertise in the Tygerburger and Tabletalk and The next 48Hours publications and on the following radio stations: Smile, Cape Talk, KFM, One FM and Fine Music Radio.



Base are privileged to be invited to take part in the **SASA art in the park** exhibitions at Rondebosch Park through Glenda Chambers: **17th March 2018**.



Next Plein Air outing at De Waal Park, Oranjezicht on 18 March 2018 1pm with a free music concert "Freshly Ground" are performing from 3-6pm. Bring along a picnic and enjoy the atmosphere, but be aware that is a dog friendly park and remember your safety and keep any valuables such as your cell on you.



Outing: Anna Beula Farm Plein air outing on 21 April – bring a picnic – details sent closer to the time

Outing: Dylan Thomas sculpture gardens 12 May – cost R140-guided walk – to share transport to Mulberry Farm, Paradyskloof Road, Stellenbosch- contact Gayle 0723755657 or email:

admin@fencesandgates.co.za. We will have tea afterwards in their lovely Old Storeroom. Maybe we can find a park

close by to do some plain air painting afterwards. I have booked for 10 but need confirmation from those who are interested in joining me.

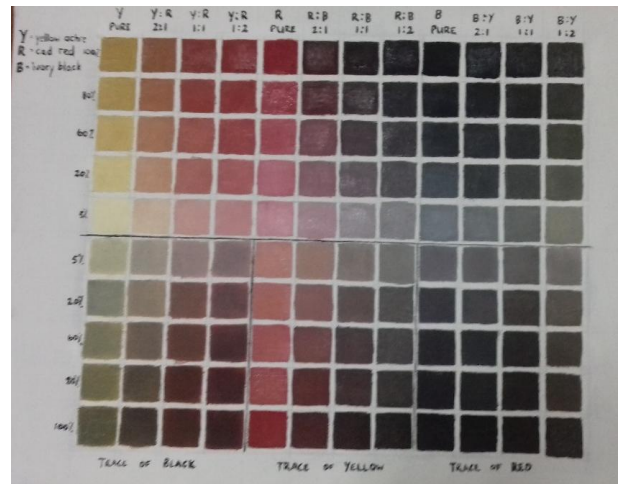
6 March 2018: 'Alla Prima' oil portrait by Damian Osborne from a live model,

The following is an excerpt from his website: "I like painting in the way that I naturally see and feel things. I paint because I aim to be proud and authentic, relying on a more traditional approach, but also trying to produce art that's neither lifeless nor clichéd. My challenge lies in trying to balance something fresh and relatable with a naturalistic style; with strong, confident painting techniques, but also between instinct and control. Painting is my purpose on this earth; there's something sacred about it. I try to capture an other-worldliness and quiet poetry in landscapes and, hopefully, a sense of serenity in my figures."



Damian brought a gorgeous young man, Rohan, to model for him. There was even a 'tongue in cheek' request from the audience that he take his top off.

The demonstration had Damian giving us constant information about the process of drawing and constructing the face planes and explaining the 'Zorn' palette which simplifies colour and focuses more on values. Damian is inspired by this Swedish painter, Anders Zorn (1860-1920). This colour palette only consists of 4 colours: Titanium White (opaque pigment) Yellow Ochre, Cadmium Red and **Ivory** Black. This black acts as the cooler blue tone. By limiting your palette you are taught to think about value – light and dark, warm and cool and how this affects how the eye perceives distance on a flat surface.



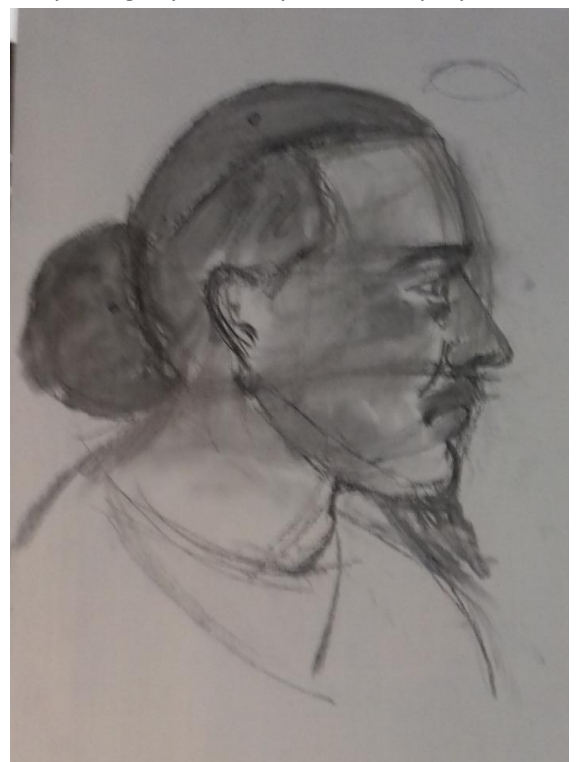
Damian primes his board first with 3 coats of acrylic gel medium or pva glue mixed with water to seal it. Then he paints it with an oil based primer. He finds that a white ground helps the limited colours of his palette shine through.

For this demonstration he decided to do a side profile and started plotting the shape of the face by drawing simplified ovals in charcoal, keeping in mind that the shape is curved and folds behind to the back of the head creating a three dimensional representation. Using the Andrew Loomis technique of horizontally dividing the face into 4 planes, it may look a bit robotic but one shouldn't be discouraged, but press on. Note that the top of the neck always leans slightly forward. Spending time at this stage getting the proportions correct saves you time at the end. Drawing is very important

and painting is really just an extension of drawing. 'I like to think of myself as drawing with my paintbrush so that the direction of brush strokes are almost like the hatching technique of a pen or pencil drawing. Drawing from life is also crucial as it trains your eye to see in the third dimension. Painting from a photo reference can make your paintings become quite flat, and the colour can also not be true to life. Close your eyes slightly so that you can simplify the shapes and see the dark and light shapes relative to each other.

After spraying this charcoal drawing well with fixative, Damian mixed skin tones, a warm brown is created by mixing all colours except the white, then, to cool this tone down a little white is added. He uses a medium mixed from 5 parts genuine turps and 1 part stand linseed oil- you can also just use refined linseed oil and odourless mineral turps mixed together. He uses many different types of brushes but prefers Raphael and Rosemary and Winsor & Newton brushes which he purchases at the Italian Art Shop. "With regard to cleaning brushes, I'm lazy and try using as few brushes as possible. But if I want to paint the following day, I just soak the brush in oil. Or to clean bristle brushes, I swish in kerosene/paraffin, which maintains the shape and spring of the bristles. Sable and soft hair brushes I was in Dettol, then rinse and use Da Vinci's brush soap or masters brush soap from Italian Art Shop or Deckle Edge."

Damian started by blocking the main planes of the face with a medium warm beige tone, mixed yellow ochre and cadmium red to make an orange and then toned it down with a little white. Using big brushes all the mid tones were first blocked in. Continuously mixing different mid tones to make it interesting. White with a little red and a touch of black makes a beautiful violet colour and white with a little yellow ochre makes a warm cream colour. Black with yellow ochre makes a dark olive green colour which is used for the corners of the eyes. Generally the thinner bonier places on the face look cooler (green/blue) and the



is used for the corners of the eyes. Generally the thinner bonier places on the face look cooler (green/blue) and the



fleshy parts look warmer (red/yellow) To create the impression that the forehead recedes a bit, Damian used a cool green because of the light and because it is complimentary to the red/orange of the main part of the face. The core shadow is the darkest part of the shadow on an object. Just before the light turns to shadow as the object curves into shadow, you have the terminator, where the light is refracted and you can use a brighter colour here to represent it. The top of the brow is quite bony and captures a lot of light so will be highlighted in the painting. Keep in mind that the cornea of the eye is transparent, and especially from a side profile, the iris is not on top of the eye/cornea, but inside the cornea. ie. Not on the convex part but

inside and the pupil is a hole. Damian uses a round bristle brush for these finer eye details. Use the direction of the brush strokes to follow the rounded forms of the face.

Well done to Damian, for giving us so much information and managing to create a beautiful painting in such a short time, as I know he prefers to work at a slower pace with a bit more detail. Please let Dot know if you want to do his workshop on Saturday the 7th of April at the Portuguese Hall in Rugby, from 9.30am to 2.30pm. Cost R350 with a R50 deposit to book your space.

3 April 2018 meeting: Acrylic pouring technique demonstration by Lynne Menge.

She will do a 'dirty cup' pour as well as pouring and manipulating the poured paint directly on the board with swiping, blowing, torching...the list goes on. She also has workshops which are really fun to do and even better if you invite a friend or family member who has never done anything 'arty' before to join you. The joy is in the process – in getting in touch with your inner child and playing. Prepare to be messy and surprise yourself by creating amazing abstract works.



8 May 2018: Harry Johnson sculpture demonstration.

Harry demonstrated during our July 2015 meeting and managed to a sculpture of a bust within an hour.

Of Interest: **Hermanus Fyn Arts** takes place 8-17 June 2018, to enter the 2018 Tollman Bouchard Finlayson Art Competition Visit the website: hermanusfynarts.co.za for details, rules and entry forms and the programme of events.

Theme: Vintage. Closing date: 18th May. The tondi (round artworks) are displayed on the heads of wooden barrels which are lying on their sides and may be viewed until September. Most forms of media are accepted-

paper, canvas, board, Perspex, fabric, embroidery, collage, mixed media, wood, glass, ceramic, mosaic, metal, photography, digitally/mechanically produced and photo based – with the maximum diameter being 60cm including mount and frame.

Art Classes: Offered by our members:

Lesley Milne teaches private one-on-one lessons in watercolour for beginners and intermediate as well as basic introduction to oils. Parklands based. Contact lesleymilne@yahoo.com for details.

Mare Bruwer's details are - email address - bruwermm@telksomsa.net. contact ph number - 082 556 1013. She gives lessons in acrylic and oil painting in Melkbos and Durbanville.

Glenda Chambers has regular water colour classes on Monday mornings and Wednesday evenings and Oil painting classes on Monday evenings and Wednesday mornings in Blouberg, contact 082 2222 820 or gchambers@mweb.co.za.

Lynne Menge has workshops and art lessons in Milnerton contact 083 754 4832 or lynne@adrenalyn.co.za.